

A wooden birdhouse, partially covered in a thick layer of white snow, hangs from a dark metal chain. The birdhouse is made of weathered wood and has a small circular entrance hole on its side. The background is a soft-focus winter scene with snow-covered branches and a light, hazy sky.

# **OAKDALE UPDATE**

**FALL - WINTER 2016**

**RECREATIONAL PROGRAMS & EVENTS  
CITY NEWS & INFORMATION**

## CITY COUNCIL AND COMMISSIONS

**CITY COUNCIL** meets the 2nd and 4th Tuesday of each month at 7 p.m., at Oakdale City Hall, 1584 Hadley Avenue; meetings are cablecast live and rebroadcast on Channel 16. Questions? Please call 730-2704.

**ECONOMIC DEVELOPMENT COMMISSION** meets the 1st Wednesday of the month (except January, April, July, or October) at 5:15 p.m. at Oakdale City Hall, 1584 Hadley Avenue. Questions? Please call 651-730-2721. (Meetings are not available for viewing).

**ENVIRONMENTAL MANAGEMENT COMMISSION** meets the 3rd Monday of each month at 7 p.m. at Oakdale City Hall, 1584 Hadley Avenue; meetings are cablecast live and rebroadcast on Channel 16. Questions? Please call 651-730-2723.

**PARKS AND RECREATION COMMISSION** meets the 3rd Tuesday of each month (except December or January) at 7 p.m., at Oakdale City Hall, 1584 Hadley Avenue; meetings are cablecast live and rebroadcast on Channel 16. Questions? Please call 651-747-3867.

**PLANNING COMMISSION** meets the 1st Thursday of each month at 7 p.m. at the Oakdale City Hall, 1584 Hadley Avenue; meetings are cablecast live and rebroadcast on Channel 16. Questions? Please call 651-730-2720.

*Watch meetings live on Channel 16 and watch rebroadcasts of meetings at [www.ci.oakdale.mn.us](http://www.ci.oakdale.mn.us)*

## OF INTEREST

**DIAL-A-RIDE TRANSPORTATION.** Transit Link is intended to serve areas where regular transit route service is not available. Transit Link is available from 6 a.m. to 7 p.m., Monday to Friday. To reserve a ride, please call 651-602-5465 up to five business days in advance.

**FREE CABLE** Receive channels 6, 14, 15, 16, 20, 95, and 98, in addition to regular broadcast channels for free. Call 651-747-3801 and request "Universal Coverage Channels".

**MAPLEWOOD/OAKDALE LIONS CLUB.** Meetings are held the 2nd Thursday of each month, 7 p.m., at Oakdale City Hall, 1584 Hadley Avenue.

**OAKDALE GARDEN CLUB.** Join the Oakdale Garden Club - call Michelle at 651-702-9017.

**OAKDALE UPDATE CABLE SHOW - LOCAL ACCESS CHANNEL 16.** Host Frank Orsello offers a wide variety of interesting guests and topics about our community. Current episodes run at various times on Channel 16 and are also available on the city's Facebook page.

**BEYOND THE YELLOW RIBBON.** As a Yellow Ribbon City, Oakdale assists members of the military and their families with errands to home maintenance. To learn more, please call Marc Cove (651-332-5222).

## CONTACT INFORMATION

Councilmember Kristen Cici.....651-353-2085  
Councilmember Lori Pulkrabek.....651-702-6355  
Councilmember Bill Rasmussen.....651-731-1676  
Councilmember Paul Reinke.....651-773-1104

**City Hall - Main.....651-739-5086**  
Administrator.....651-730-2705  
Assessments.....651-501-5309  
Assessor.....651-702-5231  
Attorney, Prosecuting.....651-730-2826  
Building Inspections.....651-739-5150  
Discovery Center, 4444 Hadley.....651-747-3860  
Development/Planning/Redevelopment.....651-730-2720  
Editor, Oakdale Update.....651-730-2704  
Engineering.....651-730-2734  
Environmental Center (Woodbury).....651-430-6655  
Fire Department, Headquarters, 5000 Hadley.....651-731-8886  
Forester/Tree Inspector.....651-501-5302  
Garden Club.....651-702-9017  
Housing.....651-730-2721  
Library, 1010 Heron.....651-730-0504  
Licensing (Liquor, tobacco, massage, tree service, etc.).....651-730-2739  
Oakdale Athletic Association.....[www.oaaonline.com](http://www.oaaonline.com)  
Oakdale Adult Softball Association.....651-731-6850  
Oakdale Area Chamber of Commerce.....651-578-7769  
Post Office, 1175 Gershwin.....651-735-8030  
Property Maintenance / Code Enforcement.....651-702-5225  
Public Works, 1900 Hadley.....651-730-2740  
Recreation Department, 4444 Hadley.....651-747-3860  
Recycling and Environmental Inquiries.....651-730-2723  
School District #622.....651-748-7560  
Summerfest.....651-730-2722  
Tartan Ice Arena, west of Tartan High.....651-714-9251  
Utility Billing.....651-730-2716  
Washington County Government Center.....651-430-6000  
Web Page.....[www.ci.oakdale.mn.us](http://www.ci.oakdale.mn.us)  
Webmaster.....651-730-2704

First Call for Help (United Way Referral Line).....211  
Travel and Traffic Information.....511  
Minnesota Relay.....711  
Call Before Digging (Gopher State One Call).....811  
Police, Fire (Non-emergency and emergency calls).....911

## HOURS AND ADDRESSES

City Hall, 1584 Hadley Avenue	8 a.m. to 4:30 p.m.
Building Inspection - Regular Hours:	8 a.m. to 4:30 p.m.
Building Inspections	
Extended Hours (May thru Sept.)	7 a.m. to 4:30 p.m.
Discovery Center, 4444 Hadley Avenue	
Monday - Friday	8 a.m. to 4:30 p.m.
Thursday	8 a.m. to 8 p.m.
Saturday	12 to 4 p.m.
Sunday	1 to 4 p.m.
Fire Station Headquarters, 5000 Hadley Avenue	8 a.m. to 4:30 p.m.
Recreation, 4444 Hadley Avenue	8 a.m. to 4:30 p.m.
Police Department Offices, 1584 Hadley Avenue	8 a.m. to 4:30 p.m.
Public Works, 1900 Hadley Avenue	7 a.m. to 3:30 p.m.

## OAKDALE WEB PAGE OAKDALE RECREATION WEB PAGE

[www.ci.oakdale.mn.us](http://www.ci.oakdale.mn.us)

[www.oakdalefun.com](http://www.oakdalefun.com)

**Facebook Followers  
Find Out First!**



# RESIDENT RESOURCE: Important Stuff to Know

**BACKYARD FIRES.** Please remember to burn only clean, dry wood. Fires producing smoke that cause discomfort or a negative impact to neighboring properties must be immediately extinguished if a complaint is lodged. (Washington County residents are reminded to call 911 for any matters relating to police or fire). What *not* to burn: green or rotten wood, leaves/needles, paper, refuse, grass, treated lumber, plastic, or combustible material.

Additional backyard fire rules: flames not to exceed 3' wide or 2' high, must be contained in a fire ring made of noncombustible material, at least 25' away from any structure, and with a water source in close proximity; and fires must be attended until completely extinguished.

**BUDGET AND TAXES.** Learn about the city's 2017 budget and how a share of your property taxes fund a wide variety of services and programs in Oakdale. Attend the Truth in Taxation meeting on December 13, 6 p.m., at Oakdale City Hall. Questions? Please call 651-730-2714.

**CHRISTMAS TREE DISPOSAL.** From December 27 through January 31, Oakdale residents may recycle naturally-grown trees at the Public Works Building, 1900 Hadley Avenue for only \$3 per tree. Hours: 7:30 a.m. to 3 p.m., Monday through Friday.

**COLLECTED AT CITY HALL YEAR ROUND: CELL PHONES, CHRISTMAS LIGHTS, FLAGS, EYEGLASSES, AND HEARING AIDS**

**DOGS.** Dear Dog Owners, please remember to:

- Pick up all dog droppings.
- Keep dogs on a leash or other physical restraint when out and about.
- Keep dogs from entering private property that is not your own. Not everyone is a pet lover -- including some other pets!
- Have your dog's city-issued license attached to their collar.

**PARKING BY MAILBOXES.** Please remember to park at least 10 feet away from either side of any mailbox during these times: Monday through Saturday, 8 a.m. and 6 p.m., to allow for no disruption in mail delivery.

**PROPERTY COMPLAINTS.** Have a concern with a neighboring property? Call 651-702-5225. Please note that you need to live within 200' of the subject property -- or be able to see it from your property.

**RECREATIONAL VEHICLES.** Time to put away boats, campers, trailers, and RVs and dust off the snowmobiles. Throughout the year, each property is allowed to keep one recreational vehicle outside; whether it's in the side or rear yard (at least 5' from property line) or on the driveway (snowmobiles from November 1 to April 30; other vehicles from May 1 to November 1). Having more recreational vehicles is fine provided only one is outside and the rest are hibernating inside the garage or at off-site storage. Questions? Please call 651-702-5225.

**TREE SERVICE.** Don't go out on a limb by hiring a company that has not been licensed by the city. Please go to [www.ci.oakdale.mn.us](http://www.ci.oakdale.mn.us) and search "Tree Services" for the list of tree service companies licensed by Oakdale. Questions? Please call 651-730-2739.

**WILDLIFE AND WATER FOWL.** Please remember that the feeding of wildlife and water fowl is not allowed.

**WINTER PARKING.** From November 1 through April 1, vehicles are not to park on city streets from 12 to 5 a.m. Please note that no on-street parking also applies when snow accumulation equals or exceeds 2", day or night, until streets are cleared curb to curb. A good rule of thumb is to keep vehicles off the road any time there is "measurable snowfall". Thank you!

## WINTER REMINDERS:

- **FIRE HYDRANT - IF IT'S NEAR, PLEASE KEEP IT CLEAR!** Please consider adopting one of the 1,500 hydrants in the city by keeping it cleared of snow so it's easy to locate, and to maintain a path from the street to the hydrant so it's easy for fire personnel to access.
- **KEEPING STREETS CLEAR.** Please don't risk a fine by plowing, shoveling, pushing, or blowing snow into the street.
- **MAILBOX OR SOD DAMAGE.** Properly installed mailboxes (see city's web site or call 651-730-2740) accidentally toppled by the blade of a snowplow will be replaced by city crews as soon as time allows. The city reserves the right to determine whether a mailbox was damaged by a plow or was due to existing deterioration of the post. Please report damage via the form at [www.ci.oakdale.mn.us](http://www.ci.oakdale.mn.us) or by calling 651-730-2740.
- **TRASH CONTAINERS.** On trash collection day, place rubbish and recycling containers on your driveway apron, behind the curb, just prior to 7 a.m.
- **PROTECT PIPES.** Prolonged low temperatures and the increased depth of frost in the ground increase the likelihood of water pipes freezing. Frozen pipes are at risk of expanding and rupturing. By monitoring your water service, you may be able to determine if it is beginning to experience difficulties. One sign is seeing discolored water when you turn on the faucet. Another is a water temperature below 40 degrees. (To determine water temperature, hold an instant read or kitchen thermometer under running water or immediately insert the thermometer into a water filled glass). One way to lessen the chance of frozen pipes is to run a faucet at a slow trickle to keep water flowing through the pipes. If you have questions, or if you utilize the services of a pipe thawing company, please call the city at 651-730-2740 or 651-730-2710.

## SHARE COMMENTS ABOUT THE GATEWAY CORRIDOR

Want to learn more about -- and provide feedback -- on possible new Gateway Corridor routes? Please plan to attend the open house on Wednesday, October 5, from 5 to 7 pm at the Envision Center (formerly Prom Center) at 484 Inwood Avenue, or at [www.thegatewaycorridor.com](http://www.thegatewaycorridor.com)

## ACORN AWARD RECIPIENTS: 2016

Each year, Oakdale's Acorn Award program recognizes beautiful landscaping. Winning property owners receive a visit from the City Council, a certificate of recognition, and a gift card from an area nursery. So when properties in the city catch your eye because they have great curb appeal, please consider making an Acorn Award nomination. Nominations are accepted all year long at [www.ci.oakdale.mn.us](http://www.ci.oakdale.mn.us) *Congratulations to this year's winners!*



**COMMERCIAL CATEGORY: Oakdale Village, 4th and Inwood**



**PUBLIC CATEGORY: Oakdale Forest Garden**



**RESIDENTIAL CATEGORY: 2675 Hallmark**

## RESIDENTS, CITIES SUPPORT COUNTY HIGHWAY 13 PROJECT

Washington County continues to lead a roadway improvement project along County Highway 13 (Ideal Avenue/Olson Lake Trail) that will address existing pavement and drainage deficiencies,



erosion problems, and other safety concerns. A series of neighborhood meetings and open houses were conducted to solicit input from area residents on alternatives relating to the County's plan to reconstruct County Highway 13 from County Highway 14 (Old TH 5) to County Highway 35 (50th Street). The information was also presented to the city councils of both Lake Elmo and Oakdale and they issued resolutions of support.

The project, to be constructed in phases, is currently in the final plan design process. The initial phase will reconstruct County Highway 13 from 44th Street to 50th Street during the 2017 construction season. This work will include a sanitary sewer extension, installation of a storm sewer system, and inclusion of a shared-use trail on the west side of the road. The segment from County Highway 14 to 44th Street will undergo pavement rehabilitation during this phase. The County plans to fully reconstruct this segment in the future, which will likely occur in conjunction with redevelopment.

For more information, please visit the project website: [www.co.washington.mn.us/County13](http://www.co.washington.mn.us/County13) or contact Washington County's Project Manager, Frank Ticknor, at [frank.ticknor@co.washington.mn.us](mailto:frank.ticknor@co.washington.mn.us) or 651-430-4319.

## THANK YOU, COMMUNITY

On behalf of the entire police department, I would like to extend a heartfelt thank you to everyone in our community who has expressed support for the men and women working in our department. Your thoughtfulness, generosity and words of encouragement serve as a reminder of the honor it is for us to serve you.

Policing can be an imperfect science and we will, from time to time, make mistakes that can significantly impact residents in an unintended way. We will continue to do everything in our power to give you our best effort, with a focus on the fairness and empathy that you have come to expect and to which you are entitled.

Please feel free to contact us if you ever have any questions or concerns regarding the services or response that we provide to you.

Police Chief William Sullivan



Oakdale Area Chamber of Commerce and  
The City of Oakdale present the 2nd annual:

# Oakdale Area Business **SHOWCASE**

## **FREE FAMILY COMMUNITY EVENT**

Sunday, October 30, 2016

11:00 am - 4:00 pm

Envision [formerly Prom Center]

484 Inwood Avenue North Oakdale MN

**Food  
Available**

**Business  
Booths**

**Halloween  
Fun**

**Trick or Treating  
at Every Booth**  
[Kids are encouraged  
to wear costumes]

**Face  
Painting**

**Balloon  
Artist**

Contact Jodi Christensen for Booth Registration | 651.773.4738 or [jchristensen@lakeelmobank.com](mailto:jchristensen@lakeelmobank.com)

**GOLD SPONSORS**

**SILVER SPONSORS**



## COUNCIL CORNER: Councilmember Lori Pulkrabek

When asked to write an article for the *Oakdale Update*, many ideas came to mind. I could write about past successes and future goals for our city, my involvement on a commission, or my thoughts on a particular issue. But a recent conversation brought up some comments - those that I hear frequently when discussing the City Council - that I would like to share.

*"Oakdale scored big when it got Hy-Vee."* (This is the comment I hear most often lately.) Yes, we did score big. But the redevelopment of the area was seven years in the making, from planning to purchase and demolition of the Oakdale Mall, to preparing and marketing the site, and then finding the right fit for our community. We are fortunate to have a skilled city staff. The council gives direction, and the staff implements it, which is no small task. So I give a lot of the credit to staff in taking our lofty goal and making it happen.

*"You have been doing this for a while - you must like it."* Yes, I do! I am not a politician. I work full-time in marketing and communications. But I believe that government should be representative, and regular citizens like myself are needed to make that happen. I've had the opportunity to learn a little bit about nearly every aspect of city government over the years. While government at the state and federal levels may be more flashy, I prefer local government because it deals with the things we see every day, such as streets, public safety (police and fire), parks and trails.

*"Oakdale seems to have a good city council. I don't see stories about you in the news."* Thankfully, this is true. I have appreciated the professionalism of our city council over the years. Even though we don't always agree, we are respectful. This allows us to use our time wisely to conduct city



business. I hear about the political climate and dysfunction in other cities and simply cannot imagine anything like that in Oakdale.

In closing, I want to say that it is an honor to serve on the Oakdale City Council. I love our community and will continue to work to make it the best it can be. Thank you for the opportunity to serve!

*Councilmember  
Lori Pulkrabek*

## FREE BUCKTHORN COLLECTION: You Pull It, We'll Pick It Up!

### Curbside Buckthorn Collection Waiver

Name: \_\_\_\_\_  
Address: \_\_\_\_\_  
Phone #: \_\_\_\_\_  
Estimated Number of Piles: \_\_\_\_\_

Collection Date (please circle one):

September 20      October 4      October 18

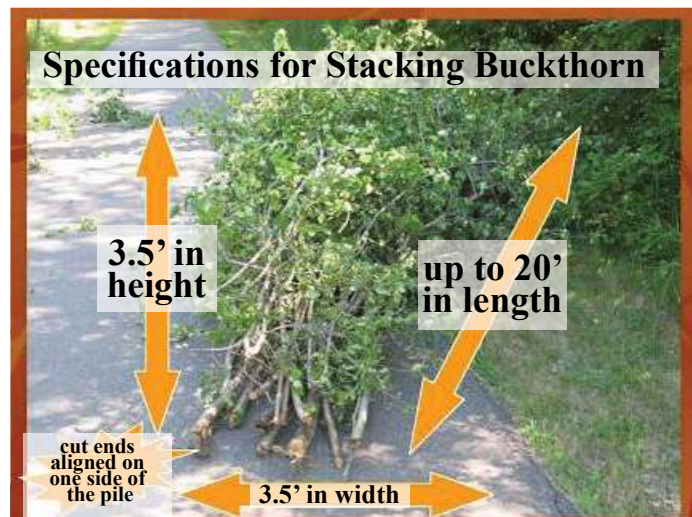
I have read the guidelines for the Oakdale Curbside Buckthorn Collection Program as required to receive free collection service from the city and to ensure that the buckthorn is accessible by a log loader truck. I understand that the city is not responsible for repairing damage to turf that may occur in the process of loading the piles.

Signature: \_\_\_\_\_

#### **Curbside Buckthorn Pickup Guidelines:**

- Submit completed waiver to 1900 Hadley Avenue by the Friday before your requested collection date.
- Stack piles with cut ends aligned and facing the curb.
- Piles must be accessible by a log loader truck and placed off of paved driveways.
- Please remember that only buckthorn will be picked up.
- The city forester has the right to inspect piles and reject those that do not comply with guidelines. Piles will be inspected on the Monday before your scheduled collection.

Submit waiver form to Oakdale Public Works  
1900 Hadley Avenue North, Oakdale, MN 55128  
**Questions? Call (651) 730-2740**



**BATTLE  
BUCKTHORN  
OCTOBER 15  
Call 651-501-5302  
to volunteer**



**program guide  
fall-winter 2016**



*Discover*

**oakdale  
recreation**

## CONTACT INFORMATION

Recreation.....651-747-3860  
Fax Number.....651-747-3861  
Park Maintenance.....651-730-2740

### ADDRESS

4444 Hadley Avenue North  
Oakdale, MN 55128

### RECREATION DEPARTMENT HOURS

Monday to Friday  
8 a.m. to 4:30 p.m.

### DISCOVERY CENTER HOURS

Monday/Tuesday/Wednesday/  
Friday: 8 a.m. to 4:30 p.m.  
Thursday: 8 a.m. to 8 p.m.  
Saturday: 12 to 4 p.m.  
Sunday: 1 to 4 p.m.

### RECREATION STAFF

Recreation Superintendent  
Julie Williams  
651-747-3867  
julie.williams@ci.oakdale.mn.us

Administrative Assistant  
Laura Heimkes  
651-747-3860  
laura.heimkes@ci.oakdale.mn.us



## CONNECTING THE GENERATIONS

*Are you a senior who needs a job done around the house?*

*Are you a teen who wants to help others in the community?*

Seniors, answer a few easy questions and we will match you up with a teen (13 to 18 years old) who you can contact to do your project.

Teens, answer a few easy questions and we will match you up with a senior who would like help with jobs around the house such as mowing, weeding, raking, etc. This is a great opportunity for you to gain work experience, job references, and completion of service hours.

*Please call 651-747-3860 for more information or to sign up!*

## EDER ONE-ROOM SCHOOLHOUSE

The school house was built in 1888 as District #12 of Washington County and known as the Eder School. It closed in 1920 and became a storage shed for the Eder family until it was moved to the Oakdale Nature Preserve and restored by the Oakdale-Lake Elmo Historical Society in 2004.

Today it is operated by the Washington County Historical Society. For more information visit [www.wchsmn.org](http://www.wchsmn.org) for contact information and tours of other historic sites in Washington County.

## ADOPT A PARK

Oakdale's "Adopt-A-Park" program is designed to help keep our parks maintained. This is a great activity for individuals, families, organizations, churches, service clubs, youth groups, schools, and businesses.

The process is easy! Select a park, contact the Parks Department at (651) 730-2740 to verify the park is available, then request, complete, and submit an application!

*Thank you to TLC Veterinary Hospital for adopting Eastside Park.*

## TABLE OF CONTENTS

1	General Information
2	Discovery Center
3-4	Adult Trips / Events / Wellness
5	Art Classes (Kids) / Art Fair
5	Athletic Associations
6	Curious Critters Club
7	Dancing
7	Family Bowling Night
8	Discover Oakdale Nature Preserve
9	Holiday Fun
10	Ice Skating
11	Markets
12	Master Gardeners Classes
12	Pickleball
13	Snowshoeing
13-16	Swimming
17	Tennis Lessons
17-18	Wellness
19	Winter Wonderland
20	Registration Information
21	Registration Form

## NOW HIRING

### ICE RINK ATTENDANTS

\$9.50/hour. Apply by November 9.  
Applications at 4444 Hadley Avenue or [www.ci.oakdale.mn.us](http://www.ci.oakdale.mn.us), under "Employment".

### INSTRUCTORS

Do you have hobby, expertise, or an interest you enjoy sharing? Consider being an instructor at the Discovery Center. Call 651-747-3867 for details.

## MUTT MITT'S and DOG LEASHES

Dog waste left on the ground is not only unsightly but pollutes the water and poses health risks. Please remember to use the Mutt Mitt's provided in city parks. It is also against the law for dogs to be unleashed in city parks. Oakdale City Code states that dogs must be on a leash or other physical restraint held by some person able to hold the animal in control.

## ADOPT A PARK PROGRAM



## FUN, FREE THINGS:

### COMMUNITY BOOK & DVD SWAP

Bring gently used books and DVD movies to the Discovery Center and swap them for something “new”. Books must be in good, readable condition, with the cover intact. Movies must be fully operable and in their original case. Even exchange: books for books and DVDs for DVDs. (No VHS tapes, please).

### DISCOVERY BACKPACKS

Stop at the Discovery Center and check out one of our “Discovery Backpacks.” Inside the packs you will find everything needed for a summertime exploration into the adjacent Nature Preserve. Seek out animal tracks, identify different types of trees and flowers, go on a scavenger hunt, use binoculars to bird watch or catch a glimpse of the deer, fox and owls that call the Nature Preserve home. Catch interesting critters using the insect net.

### GEOCACHING

Do you like exploring the outdoors? Have you tried the fun and exciting hobby of geocaching! Geocaching is a high tech treasure hunt using a GPS unit to locate hidden caches (*psst - there are 15 caches in Oakdale's park system*). The Discovery Center has a list of caches and coordinates as well as hand-held GPS units available for check-out. Geocaching is a great outdoor activity for all ages!

### NORDIC WALKING

Using Nordic Walking poles, turn your ordinary walk into a total body exercise that delivers far more motivating results and makes walking more fun! Poles resembling ski poles are used to involve the upper extremities when you walk, toning and firming every major muscle at the same time. The poles are designed using rubber tips making it possible to use them on pavement while reducing the impact of the hard surface. Stop by the Discovery Center during regular business hours and check out a pair of our NEW Nordic Walking Poles at no cost! Simply present a photo I.D. and then walk away! Adult sizes available.

### SCAVENGER HUNT

Head out into the Oakdale Nature Preserve on a scavenger hunt that will open your eyes to nature and help you discover new and exciting things! Stop at the Discovery Center before October 31 to request the Scavenger Hunt guide. Prizes will be given to those who find items on the list! (Prizes will be age 12 and under appropriate).



The Discovery Center is nestled within the picturesque Oakdale Nature Preserve at 4444 Hadley Avenue. The award-winning facility provides visitors a quiet place of reflection and a unique education experience. Visit to take in the rotating art exhibits, aquarium, “hands-on” wildlife exhibit room, and to just sit by the fire. There’s also the historic one-room schoolhouse and plenty of trails!

Looking for the “natural” setting for your wedding, reception, celebration, meeting, or function? Discover the Discovery Center. Picturesque setting, spacious rooms, kitchen and catering options, and wifi. Please call 651-747-3860 or go to: [www.oakdalefun.com](http://www.oakdalefun.com)

### DISCOVERY CENTER ART GALLERY

The art gallery at the Discovery Center has a long tradition of showcasing the creations of dozens of local artists and artisans, featuring a different artist each month.

The gallery is open Mondays, Tuesdays, Wednesdays, and Fridays: 8 a.m. to 4:30 p.m.; Thursdays: 8 a.m. to 8 p.m.; Saturdays: 12 to 4 p.m.; and Sundays: 1 to 4 p.m.

### UPCOMING FEATURED ARTISTS

**OCTOBER:** Virginia Patricelli  
**NOVEMBER:** Jeanne Dzuik  
 and Jody O'Malley  
**DECEMBER:** Joe Hilyar  
**JANUARY:** Mark Cosimini

Painting  
 Photography

Abstract Painting  
 Oil and Acrylic

If you would like to be a featured artist, please contact Laura Heimkes at 651-747-3860 or [laura.heimkes@ci.oakdale.mn.us](mailto:laura.heimkes@ci.oakdale.mn.us) for information on submitting a request to become a featured artist.

## ROAD TRIP: “A Branson Country Christmas” Treasure Island Resort and Casino Thursday, November 10

If you like country and Christmas music, hilarious comedy, and prefer good, clean family entertainment, join us to see the Ozark Jubilee show at Treasure Island Resort and Casino.

Direct from Branson, the Ozark Jubilee features an all-star cast of Branson’s top entertainers. The first half of the show salutes the great “Legends of Country Music.” The second half bursts with holiday songs, sure to jump start the season.

A traditional holiday meal of turkey, dressing, mashed potatoes, gravy, salad, vegetable, pie for dessert, and coffee or tea is on the menu.

Before the show, spend approximately an hour playing any of your favorite games or slots. \$10 in slot play will be added to your Treasure Island Passport Club Card. (Treasure Island Passport Club number or date of birth is required by the casino for \$10 slot play. Please make note on your registration form).

Depart: 9:30 a.m. Walton Park Band Shell Parking Lot  
Return: Approximately 5 p.m.  
Cost: \$78 per person. Includes transportation, show, lunch, gaming cash, tour director  
Activity Level: Easy

*Please register by October 9*

## Wednesday Cards

Seniors, come to the Discovery Center, 4444 Hadley Avenue, from 1 to 3 pm for an afternoon of cards and conversation! No need to sign up, just walk in and play! All levels of players welcomed.

## ROAD TRIP: “Ole and Lena’s Family Christmas” Ames Center Thursday, December 15

Christmas has always been Lena’s favorite time of the year and this year, Lena has invited the whole family; Ole wants nothing to do with the whole thing, especially the part where Lena has him dress up in the old Santa suit and hand out presents. Can Sven get Ole out of playing Santa? Will Lena be able to keep it all together while she prepares for the family Christmas? Find out in this hilarious comedy about family togetherness. It will be a whole lot of “Uff Da!!!”

Lunch will be at the Ames Center before the show. Choose from an assortment of mini sandwiches, soup, fresh vegetables and kettle chips, served with coffee.

Depart: 11:45 a.m. Walton Park Band Shell Parking Lot  
Return: Approximately 4:45 p.m.  
Cost: \$68 per person. Includes transportation, lunch, performance, tour guide  
Activity Level: Easy

Seats are located in rows H, J and K. A few seats will be reserved in row V for those who have difficulty with steps. *Please indicate on your registration form if you have difficulty navigating steps.*

*Please note who you would like to be seated with at the theater.*

*Please register by November 14*

## ROAD TRIP: “A Holiday in Lights” (location) Monday, December 19

It’s the most wonderful time of the year! So gather your friends and family for an evening filled with holiday cheer. See homes and

businesses adorned with twinkling lights and holiday displays, strategically placed to create beautiful winter wonderlands. This is a driving tour that will take approximately 2-1/2 to 3 hours. A non-alcoholic beverage and Christmas cookie will be served on the tour.

Depart: 5:15 p.m. Walton Park Band Shell Parking Lot  
Return: Approximately 9:30 p.m.  
Cost: \$43 per person. Includes transportation, holiday lights tour guide, tour director, snack (optional tip for the driver and step on guide not included)  
Activity Level: Easy

*Please register by December 5*

## “ROAD TRIP: “Elvis Lives” Ordway Theater Sunday, February 12

“Elvis Lives” is an unforgettable multi-media, and live musical journey of the life of Elvis Presley. His iconic style, embraced by many of today’s artists, continues to intrigue people of all generations. Featuring finalists from Elvis Presley Enterprises’ worldwide Ultimate Elvis Tribute Artist Contest, it is assured you “Can’t Help Falling in Love” with this phenomenal theatrical concert experience.

Depart: 6:30 p.m. Walton Park Band Shell Parking Lot  
Return: Approximately 10:45 p.m.  
Cost: \$73 per person. Includes show, transportation, tour guide  
Activity Level: Easy

Seats are located in the mezzanine. Rows JJ and HH. A few seats have been reserved in row MM for those who have difficulty with steps. *Please indicate on your registration form if you have difficulty navigating steps.*

*Please note who you would like to be seated with at the theater.*

*Please register by January 9*

## DISCOVER YOUR FITNESS EVENTS

Oakdale residents, 50 and older, come to a “Discover Your Fitness” event to begin your journey to understanding and improving your fitness. Take part in a fitness assessment and, based on your results, let us provide you with resources to improve your fitness. Come back to another event, be re-assessed and provided with immediate results! Seeing a positive change in your fitness level, at any age, is a great motivator!

Explore fun ideas for healthy living. We'll offer demonstrations, talks, and audience participation on a wide variety of activities. In addition, the Senior Fit Test, included at every event, is designed to help you test for strength, balance, and flexibility; skills that will extend your independent living ability.

Educators are on hand to provide one-on-one assistance and resources for you to improve fitness. Each “Discover Your Fitness” event is designed differently, so plan to attend them all!

Time: 10:30 to noon

Dates: Saturdays, September 17, November 19, and January 28

Place: Discovery Center, 4444 Hadley Avenue  
Cost: Free!

Updates and more information at the “Discover Your Fitness” Facebook page.

## OAKDALE WELLNESS 50+ Aging with GUSTO A community discussion on aging

Whether we're 6, 66 or 106, aging is happening to all of us and that's not going to change. But what can change how we treat one another and ourselves as we age and how we view aging.

According to Yale University researchers, negative stereotypes of aging become negative self-perceptions later in life. Often these perceptions operate below awareness, yet have a dramatic impact on quality of life, health and even longevity.

Join us for these life-changing discussions, led by the Vital Aging Network. To register, please contact Julie Roles at 651-917-4652.

Dates: October 4: What It Means to Age  
October 11: Influences on Views of Aging  
October 18: Getting to Aging with Gusto  
Place: Discovery Center, 4444 Hadley Avenue  
Time: 5 to 7 p.m.  
Cost: Free!



## JOIN THE WELLNESS TEAM!

Join the Oakdale Wellness 50+ Pilot Team: This is an exciting opportunity to join our team as part of the cadre of neighbors trained in the grassroots development process and become part of the steering group that plans, suggests, directs, and conducts the expansion and growth of the project. Time commitment: 6 to 10 hours per month. Some email contact between meetings.

Help organize “Discover Your Fitness” events: Aid in developing wellness resources such as handouts, teachers and speakers, and working with local businesses to create wellness displays. If you have a particular skill or expertise to share, such as healthy cooking, yoga, meditation or massage, please contact the group. We welcome help with working at the events. Time commitment: Variable – as much or as little as you desire.

Help get the word out about Wellness 50+: We have communications channels in place, but could use more. Help publicize the events, coordinate photography at events, and/or coordinate volunteers.

If you would like to become a volunteer with the Oakdale Wellness 50+ group, please contact Dale Thompson at 651-714-5232 or Jackie Chlebeck at 612-845-3127.

OAKDALE  
Wellness 50+

## KIDCREATE STUDIO

KidCreate Studio launches children into the incredible world of art. Energized classes offer an exciting format for art exploration, with a focus on art creation and art education. Lesson plans, designed by an art education professional, are age appropriate and devised to inspire the individual child. KidCreate Studio teachers provide a positive, fun, self-esteem building atmosphere where children learn to express themselves through the visual arts. Parents can be assured their child is being educated in a supportive environment where giggles and grins are encouraged. For more information, visit [www.kidcreatestudio.com](http://www.kidcreatestudio.com).

*Registration deadline is one week prior to program.*

### 3D Minecraft Masterpiece (MEA Break) ages 5 to 12 years

Your Minecraft master will love this class! They will construct a 3D diorama of a Minecraft scene. But that's not all! The kids will create Minecraft characters to add to their diorama out of Model Magic clay. Steve would love this class! Please pack a nut free snack and drink for your child.

Date: Thursday, October 20  
Time: 1 to 4 pm  
Place: Discovery Center, 4444 Hadley Avenue  
Cost: \$32 per person

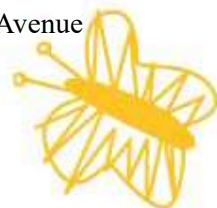
*Registration Deadline: October 13*

### Christmas Cookie Making Party ages 4 to 9 years

Kids love decorating Christmas cookies! Moms hate it – what a mess!! KidCreate to the rescue! We will work on multiple cookie – themed projects, including decorating real cookies. This is art the kids can eat! Please pack a nut free snack and drink for your child.

Date: Monday, December 5  
Time: 12 to 3 p.m.  
Place: Discovery Center, 4444 Hadley Avenue  
Cost: \$32 per person

*Registration Deadline: November 28*



## DISCOVERY CENTER ART FAIR

Discover the perfect piece of original artwork to purchase for home, office, or gift-giving at the Oakdale Art Discovery Fair. Local artists and artisans will have a variety of artwork such as paintings, photography, drawings, sculpture, pottery, and more available for purchase.

Bring the kids for the free “Kid’s Art Korner” where kids can try out their artistic talent.

Date: Saturday November 5  
Time: 10 a.m. to 5 p.m.  
Place: Discovery Center, 4444 Hadley Avenue  
Cost: Free to browse!

## ATHLETIC ASSOCIATIONS SERVING OAKDALE

These associations operate independently from Oakdale Recreation. Although they use city/school facilities, they oversee and organize all aspects of their own programs.

**Minnesota Women’s Soccer**  
[www.mwsl.org](http://www.mwsl.org)

**North Stars Skate School**  
Beginning, figure skating, hockey lessons.  
3 years to adult. 651-501-3667

**Oakdale Athletic Association (OAA) Youth Sports.**  
Volleyball, soccer, football, t-ball, baseball,  
basketball and lacrosse. [www.oaaonline.com](http://www.oaaonline.com)

**Oakdale Adult Softball Association (OASA)**  
Men’s, women’s, co-rec softball leagues.  
[www.oasa.us](http://www.oasa.us)

**OMNI Otters Swim Team**  
Ages 6 to 18+. [www.omniotters.com](http://www.omniotters.com)

**St. Paul–Ramsey County Horseshoe Club.** Sanctioned  
by the National Horseshoe Pitches Association.  
[www.sprchorseshoeclub.weebly.com](http://www.sprchorseshoeclub.weebly.com)

**Tartan Area Hockey Association (TAYHA)**  
Boys and girls K to 12. [www.tayha.org](http://www.tayha.org)

**Tartan Juniors Olympic Volleyball Program**  
Girls ages 9 to 18. [www.tartanjuniorsvb.wixsite.com](http://www.tartanjuniorsvb.wixsite.com)

**Tartan Youth Wrestling**  
Boys from K-8. Season runs November - April.  
Practices held Mondays and Wednesdays at Tartan  
612-965-6000. [edelacy@comcast.net](mailto:edelacy@comcast.net)



On Fridays, the Recreation Department Center offers a wide variety of fun and educational nature programs for children ages 3 to 6.

Children participate in discussions, play games, watch DVDs, and create projects for each themed program. Critter Club kids like to go outside, so please dress for the weather!

When: Fridays, 9:30 to 11 a.m.  
 Ages: 3 to 6 (child must be potty trained)  
 Cost: \$6 per child/per session  
 Place: Discovery Center, 4444 Hadley Avenue

*Registration deadline is one week prior to the start of each program*



## October 7: From Seed to Sunflower

Learn how a little seed grows to become a magnificent sunflower!

## October 21: I'm a Scarecrow

They are not just for scaring away birds! Join us as we make our own scarecrows to celebrate the month of October.

## November 4: Ssssnakes!

It hisses, it slithers, and it's covered in scales. Make no mistake... it's a snake! Come slither into the world of snakes!



## December 2: Annual Trim the Tree Day

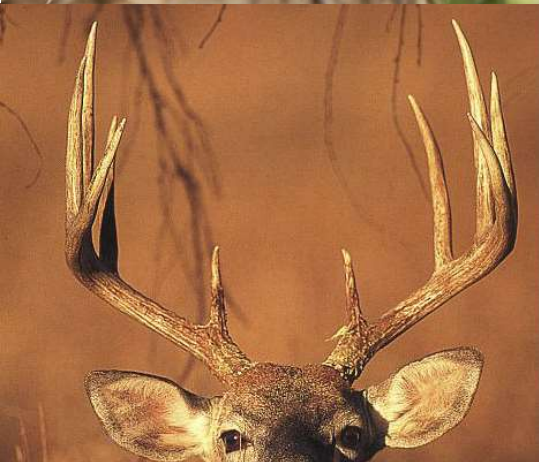
Our traditional decorate the tree day. Join us as we make homemade ornaments to decorate our tree at the Discovery Center. You'll get to take ornaments home too!

## December 9: The Gingerbread Man

"Run, run as fast as you can, you can't catch me, I'm the gingerbread man!" Celebrate the holiday season as we read the "Gingerbread Man" and decorate our own gingerbread cookies!

## January 13: Secrets of Winter

If you look closely through the dark trees, around the frozen pond, and in the snowy hollows, you will find lots of winter activity in nature! Join us as we learn the secrets of winter.



## January 27: What Large Antlers You Have!

We'll read the book "Imogene's Antlers" and learn what life is like for animals with headgear!

**WWW.OAKDALEFUN.COM**  
**WWW.OAKDALEFUN.COM**  
**WWW.OAKDALEFUN.COM**

Legacy Dance Studio is family owned and has been operating in Oakdale since 1998. Legacy Dance Studio's curriculum stresses ballet technique as the base for all dancers. The type of dance offered in addition to ballet are tap, jazz, lyrical, and hip hop. Legacy offers a variety of classes for recreational students ages 2 to 18, ranging from beginner to advanced. Each age class has a maximum number of students to allow an appropriate amount of one-on-one attention.

Please register at:  
Legacy Dance Studio  
7157 - 10th Street N, Oakdale  
651-735-9216  
www.legacydancestudio.com



## CINDERELLA'S DADDY DAUGHTER PRINCESS BALL

Join ONCE UPON A STAR'S CINDERELLA, ARIEL and JASMINE for an enchanting evening with a special adult-date! Each princess will receive her own princess tote bag, mermaid jewelry craft project and castle glow gift to take home. Enjoy a royal snack and all couples will have a photo taken with next-day proof access.

Date: Friday, September 30  
Time: 6:30 to 8:00 p.m.  
Recommended Ages: 3 to 8 years, with adult date  
Cost: \$28  
Place: Discovery Center, 4444 Hadley Avenue

*Please register by September 23*

*Adults – please bring your camera for many memorable photo opportunities, including a group-princess photo with your princess!*

### Tots (18mon-2yr) Creative Movement/Tumbling

\$32.00 monthly  
Monday 6:00-6:30pm  
Thursday 6:00-6:30pm  
Saturday 11:00-11:30am

### 3-4 ½yr old Tap & Ballet

\$52.00 monthly  
Monday 6:30-7:30pm  
Wednesday 5:00-6:00pm  
Saturday 11:30-12:30pm

### 4 ½ -5yr old Tap & Ballet

\$52.00 monthly  
Monday 5:00-6:00pm  
Tuesday 5:30-6:30pm  
Wednesday 6:00-7:00pm  
Saturday 10:00-11:00am

### Int. 5-6yr old Tap & Ballet

\$52.00 monthly  
Tuesday 6:30-7:30pm  
Thursday 5:00-6:00pm

### Beg. 6-8yr old Tap & Ballet

\$52.00 monthly  
Wednesday 7:00-8:00pm  
Saturday 12:30-1:30pm

### Int. 6-8yr old Tap & Ballet

\$52.00 monthly  
Thursday 6:30-7:30pm

### Int. 8-10yr old Tap, Jazz & Ballet

\$63.00 monthly  
Monday 6:30-8:00pm  
Thursday 6:00-7:30pm

### ALSO AVAILABLE!

- Online Registration
- Auto Pay

### Future Stars

Tap, Jazz & Ballet  
\$84.00 monthly –pre competition  
Friday 6:30-8:30pm

### Beg. 9-12yr old Tap, Jazz & Ballet

\$63.00 monthly  
Tuesday 7:00-8:30pm

### Int. 11-13yr old Tap, Jazz & Ballet

\$63.00 monthly  
Thursday 7:30-9:00pm

### Teens 14+ yr old Tap, Jazz & Ballet

\$63.00 monthly  
Monday 7:30-9:00pm

### All Stars Boys class 7-13yr old

\$38.00 monthly  
Friday 7:00-8:00pm

### Dancing Dads

January - June  
Friday 8:00-9:00pm

### Beg. Leaps & Turns

Tuesday 4:30-5:30pm

### Int. Leaps & Turns

Friday 4:30-5:30pm

### Adv. Leaps & Turns

Thursday 6:30-7:30pm

## FAMILY BOWLING NIGHT

Join us for a family fun night at PINZ!  
Bring your family/friends (up to 5 people)  
for a great night of bowling!

Date: Friday, October 14  
Time: 6:30 to 8 pm  
Place: PINZ Oakdale, 7520 32nd Street  
Cost: \$45 per lane (includes 1-1/2 hours of bowling, shoe rental for all members of your party, large 1-topping pizza, pitcher of soda). *When registering, please indicate the number of bowlers per lane.*

*Please register by October 7*

OAKDALE NATURE PRESERVE TRAILS

The Oakdale Nature Preserve, located at 4444 Hadley Avenue, is 250 acres of wooded, natural areas in the heart of a city. The Preserve offers plenty of exploration options from miles of trails for walking to rolling hills for snowshoeing to benches, picnic tables and a shelter to simply enjoy the Preserve and its abundant wildlife.

Recent additions to the Preserve include a wooden boardwalk spanning a portion of Mud Lake; a forest garden that helps us understand the inner workings of forest life; and fitness stations to enhance your workout.

The Discovery Center, nestled within the preserve, is an award-winning facility that offers rotating art exhibits, aquarium, "hands-on" wildlife exhibit room, and meeting/reception facilities. The Discovery Centers rents tandem bikes, Nordic Walking poles, and snowshoes, depending on the season.

Trail Name (length)

- Paved (1.38 mi)
- - - Paved Shortcut (1.23 mi)
- Blue (0.3 mi)
- Green (0.68 mi)
- Orange (0.57 mi)
- Purple (0.28 mi)
- Yellow—Entrance/Exit
- White—Connecting

- Picnic Table
- Picnic Shelter
- Mutt Mitts Station

MUD LAKE

Forest Garden

Discovery Center

Schoolhouse

*During the winter, the paved trails throughout the Oakdale Nature Preserve are cleared after each snowfall; however, snow is not removed from the boardwalk.*

40th St N



## Write Santa a Letter!

Watch for Santa's magical red mailboxes to appear at the Discovery Center and at City Hall.

Write Santa a letter and let him know whether you have been a little naughty or alot NICE and include your wish list!

Deposit your letter into the mailbox by December 18  
Please include your full name, age, and address in your letter.

## FLASHLIGHT PUMPKIN HUNT

Search for pumpkins in the Oakdale Nature Preserve! Then enjoy ghoulish games, eerie entertainment, chilling refreshments, bonfire, and a family DJ. Costumes are optional; but remember to bring your flashlight!

Date: Thursday, October 27  
Time: 7 to 8:30 p.m.  
Place: Discovery Center, 4444 Hadley Avenue  
Ages: Up to 12  
Cost: \$12 per person, parents attend for free

All participants receive a glow necklace at check-in!

*Please register by October 20*

## VISIT FROM SANTA

Santa is planning another special visit to Oakdale on Thursday, December 8. He'll travel through town on an Oakdale Fire truck covered in twinkling lights!

To make Santa's special visit extra special, bundle up and make plans to welcome him at one of these stops:

6 to 6:15 p.m.  
6:20 to 6:35 p.m.  
6:40 to 6:55 p.m.  
7:00 to 7:15 p.m.  
7:20 to 7:35 p.m.

North Fire Station, 5000 Hadley Avenue  
Discovery Center, 4444 Hadley Avenue  
Hadley Avenue & Eberle Park  
Hadley Avenue & Stillwater Boulevard  
Oakdale City Hall, 1584 Hadley Avenue



## SNOW SCULPTURE CONTEST

Calling all creative Oakdale families! Do you have what it takes to create the best snow sculpture in Oakdale? Then head outside anytime the snow begins to fall and start creating!

This year's theme is  
"Minnesota: Land of 10,000 Lakes".

*Winning sculpture will receive a  
\$100 Marcus Theater gift card!*

Submit entries (photo) to [julie.williams@ci.oakdale.mn.us](mailto:julie.williams@ci.oakdale.mn.us)  
by March 31. The winner will be contacted by April 5.



Outdoor skating rinks are located throughout the city and offer general skating and hockey facilities. Weather permitting, rinks are scheduled to open in late December and close for the season in late February (weather dependent).

The following guidelines will be used to determine outdoor rink closures: when temperatures soften the ice to create unsafe skating conditions (estimated temps of 37 degrees or higher may cause rink closure), when actual temperature reaches -10 degrees or wind chill temperature reaches -25 degrees, or if more than 3 inches of snow accumulates on the ice at times when maintenance crews are not available.

For rink updates, check the Recreation Department's Facebook page or go to [www.oakdalefun.com](http://www.oakdalefun.com)

### **Maintained, Supervised Rinks: with Heated Warming Houses**

**Northdale Park** - 50th Street and Granada Avenue  
**Walton Park Hockey Rink** - 15th Street and Hadley  
**Walton Park Pleasure Rink** - 15th Street and Hadley

Hours: Monday through Friday 4 to 8 p.m.  
Saturdays 12 to 8 p.m.  
Sundays 12 to 7 p.m.

*Ice Scooters are available at the Walton Pleasure Rink, at no charge. Scooters are great tools for anyone learning the basics of skating.*

**COMPLIMENTARY HOT CHOCOLATE  
AT WALTON PARK PLEASURE RINK!**

### **WINTER BREAK and HOLIDAY HOURS**

December 23	4 pm to 8 pm
December 24	12 pm to 4 pm
December 25	Closed
December 26	1 pm to 8 pm
December 27	1 pm to 8 pm
December 28	1 pm to 8 pm
December 29	1 pm to 8 pm
December 30	1 pm to 8 pm
December 31	12 pm to 4 pm
January 1	Closed
January 2	1 pm to 8 pm
January 16	1 pm to 8 pm
February 20	1 pm to 8 pm

### **Maintained, Unsupervised Rinks: No Warming House Available**

Eastside Park - Helmo Avenue

*Map of rink locations at [www.oakdalefun.com](http://www.oakdalefun.com)*

**TARTAN ARENA  
INDOOR RINK  
- OPEN SKATING -  
740 Greenway Avenue  
651-714-9251**

Sundays, 1 to 3 p.m.: \$5 per person  
(open skating may be canceled without notice)

[www.isd622.org/tartanarena](http://www.isd622.org/tartanarena)





## FARMERS MARKET

City Hall Parking Lot  
15th and Hadley  
**WEDNESDAYS 2 to 6 pm**  
Last market of the season:  
**October 26**

Fresh produce, baked goods, sweets,  
meat, coffee, and much more!

## INDOOR MARKET

Discovery Center - 4444 Hadley  
**SATURDAYS 9 am to 1 pm**  
November 26  
December 10  
January 7 and 21  
February 4 and 18  
March 4 and 18

SHOP  
LOCAL

Over 20 local vendors offer a unique variety of items including baked goods, jams,  
meats, gourmet foods, salsas, strudels, essential oils, and much more!

*The perfect place for holiday shopping!*



Garage  
SALE

## INDOOR GARAGE SALE

Discovery Center - 4444 Hadley  
**SATURDAY, MARCH 11**  
9 am to 1 pm *No Early Birds!*

Buy or sell new and formerly new  
items including clothing, books, toys,  
collectibles, and more.

Rent two tables for only \$20!  
*Space is limited and fills up fast  
so register early and by March 3.*  
Sellers must contain all their items to two tables.

**Set up times:**  
Friday, March 10  
from 4:30 to 8 pm  
Saturday, March 11  
from 8 to 9 am

Washington County Master Gardener Jane Klein will present important information about gardening as well as gardening tips at two free classes.

## **CLIMBERS and VINES**

A garden visually has three layers, the tree canopy, the ground cover plantings and then the “in between” space. Climbers and vines give height and can fill that visual void that can be colorful, pollinator friendly as well as offer up some veggies and fruits.

Date: Saturday, November 19  
Time: 1 to 2 p.m.  
Place: Discovery Center, 4444 Hadley Avenue  
Cost: FREE  
Please call 651-747-3860 to reserve your spot



## **MINDING YOUR GARDEN Ps and Qs**

New to gardening or more experienced, this presentation will cover some of the things that can help make or keep your garden looking good. Topics include pollinators, pests, plants and a lot of other good gardening information.

Date: Saturday, January 14  
Time: 10 to 11 a.m.  
Place: Discovery Center, 4444 Hadley Avenue  
Cost: FREE  
Please call 651-747-3860 to reserve your spot



## **INTRODUCTION TO PICKLEBALL**

Pickleball is a great workout for all fitness levels. Learn the basics of the game! Equipment will be provided or bring your own (please note on registration form if you need equipment). Ages 18 and up.

Dates: Friday, September 30  
Tuesdays, October 4, 11, 18  
Time: 5:30 to 6:30 p.m.  
Place: Walton Park Pickleball Courts  
Cost: \$20

*Registration Deadline Sept. 23*

## **OPEN COURT PICKLEBALL**

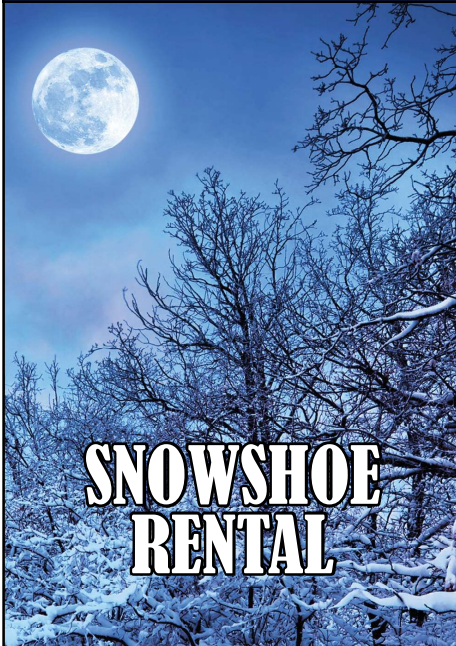
Join the Oakdale Pickleball Club for a game of pickleball. All are welcome to join during the open court play. Equipment will be provided or bring your own. The courts will be operational through October (weather permitting).

Dates: Tuesday and Thursday mornings  
9 a.m. to 12 p.m.  
  
Monday and Wednesday evenings  
6 to 8 p.m.  
  
Sunday afternoons  
3 to 6 p.m.

Place: Walton Park Pickleball Courts (hockey rink)

Questions about the Oakdale Pickleball Club?  
Please contact Chuck Scott @ 651-439-5307





Take your family, friends, neighbors, and coworkers snowshoeing in the 250 acres of the Oakdale Nature Preserve. Watch for animal tracks, deer, fox, and birds!

Rates are \$5/person for a two-hour rental. Sizes available for both children and adult. First come, first served. Reservations recommended for groups of six or more. Please call 651-747-3860.

Rentals now available daily, beginning December 20 (pending snow conditions): at these times:

Monday through Friday:  
9 a.m. to 4 p.m.

Saturdays:  
12 to 4 p.m.

Sundays:  
1 to 4 p.m.

## Wahoo! Adventures Presents:

### FAMILY FULL MOON SNOWSHOE

Join us at the Oakdale Nature Preserve to enjoy the trails at night with the full moon and stars overhead. One trail will be lit with ice luminaries but you can snowshoe through the entire park!

Then gather by the bonfire for hot chocolate and roasted marshmallows. Fee includes snowshoes, but you are welcome to bring your own. If snowshoes are needed, please indicate on your registration form.

Date: Friday, January 13  
Time: 7 to 8:30 p.m.  
Place: Oakdale Nature Preserve  
Discovery Center  
4444 Hadley Avenue  
Cost: \$15/per person or  
\$50 for family of 4

*Please register by January 6*

### FULL MOON SNOWSHOE, SIP & SAMPLE

Join us on February 10 for a special event of food, drink, and adventure! The evening offers snowshoeing in the Oakdale Nature Preserve, lit by ice luminaries; getting toasty by the outdoor bonfire; and then indoors offers:

- Appetizers and food demonstrations from Hy-Vee
- Locally Crafted Beer samples by Maple Island Brewery
- Wine samples selected by local experts at Bright Wines
- Vintage Game Room

Date: Friday, February 10  
Time: 7 to 10 p.m.  
Place: Discovery Center  
4444 Hadley Avenue  
Cost: \$34 per person,  
\$39 day of event

### SNOWSHOE CLINIC

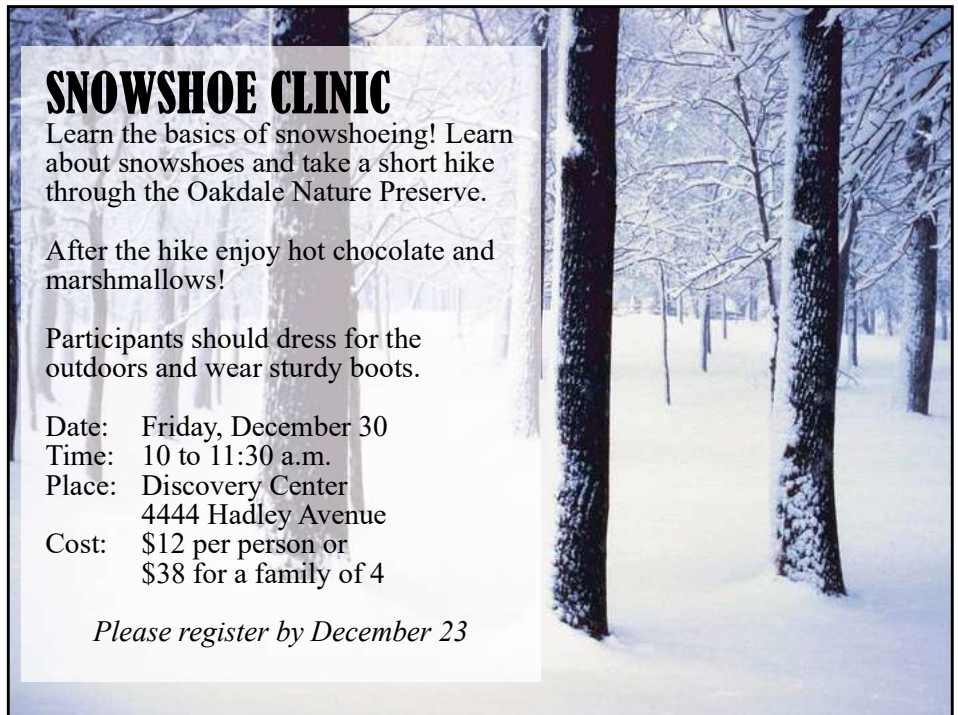
Learn the basics of snowshoeing! Learn about snowshoes and take a short hike through the Oakdale Nature Preserve.

After the hike enjoy hot chocolate and marshmallows!

Participants should dress for the outdoors and wear sturdy boots.

Date: Friday, December 30  
Time: 10 to 11:30 a.m.  
Place: Discovery Center  
4444 Hadley Avenue  
Cost: \$12 per person or  
\$38 for a family of 4

*Please register by December 23*



Wahoo! Adventures is founded by Kerri Kolstad, she coordinates a variety of outdoor experiences.

District 622 Community Education offers quality swimming activities for all ages. Experienced and caring instructors, trained by the American Red Cross, help swimmers develop water safety and swimming skills in a positive learning environment.

**LESSONS HELD AT:**

**Skyview School**

1100 Heron Avenue, Oakdale

**John Glenn Middle School**

1560 County Road B East, Maplewood

**REGISTER ON-LINE:**

isd622.thatcommunityed.com

**REGISTER BY MAIL**

**or IN PERSON:**

District 622 Ed Center

2520 E 12th Avenue

North St. Paul, MN 55109

**NEW PHONE NUMBER!**

PHONE: 651-748-7439

FAX: 651-748-7497

**GIRL'S SWIM NIGHT**

An opportunity for women and girls to have the pool to themselves. It provides...

*A place where girls can feel comfortable and relaxed while swimming.*

*A place where girls can exercise or play with family and friends.*

*A place for fellowship.  
A place to forge new friendships.*

John Glenn Middle School  
on select Friday nights in 2016:  
October 14, November 11,  
and December 2.

Swimming is from 6:30 to 8 pm;  
refreshments from 8 to 9 pm

Suggested Admission: Adults \$3 |  
Children / Students \$2 | Family \$6

Free supervised childcare  
for sons and brothers.

Pool staffed by all female  
lifeguards and swim instructors.

**SWIM CLASS DESCRIPTIONS**

**PARENT & CHILD LESSONS - 6 MONTHS TO 5 YEARS**

Child must wear swim diaper if not trained | 30 minute classes

**Parent/Tot 1 (6 months-2 years)** Develop water readiness through games & play.

**Parent/Tot 2 (2-4 years)** Child learns basic swim skills through group activities.

**Parent/Tot 1 & 2 (6 months-4 years)** Child learns basic swim skills through group activities.

**Parent/Preschooler (3-5 years old)** A graduate of Parent/Tot 2 or will put face under water. Child learns basic swimming techniques through drills and play.

**PRESCHOOL LESSONS - 4 TO 5 YEAR OLDS**

Child participates without adult | 30 minute classes

**Turtles (Preschool 1)** Child who will not readily put face in the water. Learn basic skills and increase comfort level.

**Bobbers (Preschool 2)** Child who will put face in the water and is comfortable in the water.

**Super Kids (Preschool 3)** Child who can swim 10 feet with face in the water; child may have fundamental swim skills but is not ready for the larger class and longer class time of Level 1.

**SCHOOL AGE LESSONS - 6 YEARS AND OLDER**

American Red Cross Levels 1 to 6 | 55 minute classes

**Level 1 & 2 Fundamental Skills** Entry level class for children ages 6 and older.

**Level 3 Stroke Development** Passed Level 2 or can jump in deep water, swim on front and back for 30 feet.

**Level 4 Stroke Improvement** Passed Level 3. Elementary backstroke, side stroke and butterfly kick.

**Level 5 Stroke Refinement** Passed Level 4. Increase endurance of all strokes. Breast stroke, butterfly and side stroke.

**Level 6 Personal Water Safety and Fitness Swimmer** Core skills are the same.

**Personal Water Safety** - emphasis on self-rescue, survival float, survival swimming.

**Fitness Swimmer** - emphasis on learning to increase and evaluate personal fitness.

**Private & Semi Private Swim Lessons for Children and Adults**

Instructor will customize each 30 minute lesson. Call for additional times or to register 2 or more for semi-private lessons. Register online for private lessons. Cost/lesson Private \$22 | Semi-private \$15



## John Glenn Middle School – Fall Lessons

CLASS	<b>Mondays</b> September 26 to November 21 (no class October 31) <b>8 Lessons \$70</b>	<b>Wednesdays</b> September 28 to November 16 <b>8 Lessons \$70</b>	<b>Thursdays</b> September 29 to December 8 (no classes October 20 or November 3 & 24) <b>8 Lessons \$70</b>	<b>Saturdays</b> October 1 to December 10 (no classes October 22 or November 5 & 26) <b>8 Lessons \$70</b>
	Time      Class #	Time      Class #	Time      Class #	Time      Class #
Parent/Tot 1	5:30 pm   SPT1A			9:00 am   SPT1B
Parent/Tot 2	6:00 pm   SPT2A	6:00 pm   SPT2B	6:00 pm   SPT2C	9:30 am   SPT2D
Parent/Preschooler	6:30 pm   SP1		6:30 pm   SP2	10:00 am   SP3
Turtles	6:00 pm   STU1	6:00 pm   STU2	5:30 pm   STU3	9:00 am   STU4
Bobbers	5:30 pm   SB1	6:30 pm   SB3	5:30 pm   SB4	9:30 am   SB5
Bobbers	6:30 pm   SB2			10:00 am   SB6
Super Kids		6:30 pm   SSK1	6:00 pm   SSK2	10:00 am   SSK3
Level 1 and 2	5:30 pm   S1A	6:00 pm   S1C	6:00 pm   S1E	9:00 am   S1G
Level 1 and 2	6:30 pm   S1B	7:00 pm   S1D	6:30 pm   S1F	10:30 am   S1H
Level 3	7:00 pm   S3A	7:00 pm   S3B	7:00 pm   S3C	10:30 am   S3D
Level 4	7:00 pm   S4A	7:00 pm   S4B	7:00 pm   S4C	10:30 am   S4D
Private Lessons 8 - 30 min lessons \$176	7:30 pm   SPJ1		5:30 pm   SPJ2 7:30 pm   SPJ3	11:30 am   SPJ4 11:30 am   SPJ5 11:30 am   SPJ6

## Skyview Community School – Fall Lessons

CLASS	<b>Mondays</b> September 26 to November 21 (no class October 31) <b>8 Lessons \$70</b>	<b>Tuesdays</b> September 27 to December 6 (no classes October 18 or November 1 & 8) <b>8 Lessons \$70</b>	<b>Saturdays</b> October 8 to December 10 (no classes October 22 or November 5 & 26) <b>8 Lessons \$70</b>	<b>Fall Open Swim &amp; Lap Swim</b>  Saturdays @ Skyview <b>October 8 to December 10</b> (except October 22 and November 26)  <b>2 to 3:30 pm</b>  <b>Walk-In Rate:</b> Adults \$4 Student/Child \$3 Immediate Family \$10  <i>Swim programs on Tues., Wed., and Sat. afternoons at Skyview are offered in partnership with the City of Oakdale.</i>
	Time      Class #	Time      Class #	Time      Class #	
Parent/Tot 2		6:00 pm   SPT2E		
Bobbers		6:30 pm   SB7	1:00 pm   SB8	
Level 1 and 2	6:00 pm   S1J	6:00 pm   S1L	9:30 am   S1N	
Level 1 and 2	7:00 pm   S1K	7:00 pm   S1M	10:30 am   S1P	
Level 1 and 2			1:00 pm   S1Q	
Level 3	6:00 pm   S3E	6:00 pm   S3G	11:30 am   S3J	
Level 3	7:00 pm   S3F	7:00 pm   S3H		
Level 4	6:00 pm   S4E	7:00 pm   S4F	10:30 am   S4G	
Level 5	7:00 pm   S5A	6:00 pm   S5B	9:30 am   S5C	
Level 6	7:00 pm   S6A	7:00 pm   S6B	11:30 am   S6C	
Private Lessons 8 - 30 min lessons \$176	6:00 pm   SPS1 6:30 pm   SPS2		9:00 am   SPS3 9:00 am   SPS4 1:30 pm   SPS5	

**ADULT WATER FITNESS (FALL SESSION)** Use the resistance of the water to develop cardiovascular endurance, muscular strength while improving flexibility. No swimming ability is necessary for this total body work out.

Water Workout	John Glenn	Tuesdays, October 4 to December 6 (no classes November 1 & 8)	8 to 9 pm	\$64 (8 classes)	SW1
Cardio Water Workout	Skyview	Wednesdays , September 28 to December 7 (no class November 23)	7 to 8 pm	\$80 (10 classes)	SC1
<b>Walk Ins welcome at either session - Rate \$10/class (check or exact cash preferred)</b>					

## John Glenn Middle School – Winter Lessons

CLASS	<b>Mondays</b> January 9 to March 6 (no classes January 16 or February 20) <b>7 Lessons \$62</b>	<b>Wednesdays</b> January 11 to March 1  <b>8 Lessons \$70</b>	<b>Thursdays</b> January 5 to March 9 (no classes January 19, February 2, or March 2) <b>7 Lessons \$62</b>	<b>Saturdays</b> January 14 to March 4  <b>8 Lessons \$70</b>
	Time      Class #	Time      Class #	Time      Class #	Time      Class #
Parent/Tot 1	5:30 pm    SWM1			9:00 am    SWM2
Parent/Tot 2	6:00 pm    SWT1	5:30 pm    SWT2	6:30 pm    SWT3	9:30 am    SWT4
Parent/Preschooler	6:30 pm    SWP1	6:00 pm    SWP2		10:00 am    SWP3
Turtles	5:30 pm    SWTU1	5:30 pm    SWTU2	6:00 pm    SWTU3	9:00 am    SWTU4
Bobbers	5:30 pm    SWB1	6:00 pm    SWB2	6:00 pm    SWB3	9:00 am    SWB5
Bobbers			6:30 pm    SWB4	10:00 am    SWB6
Super Kids	6:00 pm    SWSK1	6:30 pm    SWSK2		9:30 am    SWSK3
Level 1 and 2	6:00 pm    SW1A	5:30 pm    SW1C	6:00 pm    SW1E	9:30 am    SW1G
Level 1 and 2	6:30 pm    SW1B	6:30 pm    SW1D	7:00 pm    SW1F	10:30 am    SW1H
Level 3	7:00 pm    SW3A	6:30 pm    SW3B	7:00 pm    SW3C	10:30 am    SW3D
Level 4	7:00 pm    SW4A		7:00 pm    SW4B	10:30 am    SW4C
Private Lessons 8 - 30 min lessons \$176	7:30 pm    SPWJ1 (7 lessons \$154)	7:00 pm    SPWJ2		11:30 am    SPWJ3 11:30 am    SPWJ4 11:30 am    SPWJ5

## Skyview Community School – Winter Lessons

CLASS	<b>Mondays</b> January 9 to March 6 (no classes January 16 or February 20) <b>7 Lessons \$62</b>	<b>Tuesdays</b> January 10 to March 7 (no classes January 24 & 31) <b>7 Lessons \$62</b>	<b>Saturdays</b> January 7 to March 4 (no class January 28) <b>8 Lessons \$70</b>	<b>Winter Open Swim &amp; Lap Swim</b>  Saturdays @ Skyview <b>January 7 to March 4 (except January 28)</b>  <b>2 to 3:30 pm</b>  <b>Walk-In Rate:</b> Adults \$4 Student/Child \$3 Immediate Family \$10  <i>Swim programs on Tues. Wed. and Sat. afternoons at Skyview are offered in partnership with the City of Oakdale.</i>
	Time      Class #	Time      Class #	Time      Class #	
Parent/Tot 2		6:00 pm    SWT5		
Bobbers		6:30 pm    SWB7	1:00 pm    SWB8	
Level 1 and 2	6:00 pm    SW1J	6:00 pm    SW1L	9:30 am    SW1N	
Level 1 and 2	7:00 pm    SW1K	7:00 pm    SW1M	10:30 am    SW1P	
Level 1 and 2			1:00 pm    SW1Q	
Level 3	6:00 pm    SW3E	6:00 pm    SW3F	9:30 am    SW3H	
Level 3		7:00 pm    SW3G		
Level 4	6:00 pm    SW4D	6:00 pm    SW4E	10:30 am    SW4F	
Level 5	7:00 pm    SW5A	7:00 pm    SW5B	11:30 am    SW5C	
Level 6	7:00 pm    SW6A	7:00 pm    SW6B	11:30 am    SW6C	
Private Lessons 8 - 30 min les- sons \$176			9:00 am    SPWS1 9:00 am    SPWS2 1:30 pm    SPWS3 2:00 pm    SPWS4	

**ADULT WATER FITNESS (WINTER SESSION)** Use the resistance of the water to develop cardiovascular endurance, muscular strength while improving flexibility. No swimming ability is necessary for this total body work out.

Water Workout	John Glenn	Tuesdays, January 10 to March 7(no classes January 24 & 31)	7 to 8 pm	\$56 (7 classes)	SW2
Cardio Water Workout	Skyview	Wednesdays January 11 to March 8	7 to 8 pm	\$72 (9 classes)	SC2
<b>Walk Ins welcome at either session - Rate \$10/class (check or exact cash preferred)</b>					



## INDOOR TENNIS LESSONS

Learn some basic fundamentals of tennis in this fun class! Skills taught include grip, stance, swing and more in a fun and safe learning environment. We use USTA approved tennis equipment designed for youth tennis. If you have your own racquet, please bring it along each week. The Recreation Department has a few to loan each night. The class is taught by Dan Stumpf, North High School girl's tennis coach.

**Dates:** Tuesdays: October 25, November 1, 15, 22, 29, December 6, 13  
(No class November 8)  
**Times:** Ages 4 to 7: 6 to 6:45 p.m.  
Ages 8 to 12: 7:15 to 8 p.m.  
**Place:** Discovery Center  
4444 Hadley Avenue  
**Cost:** \$35 per child

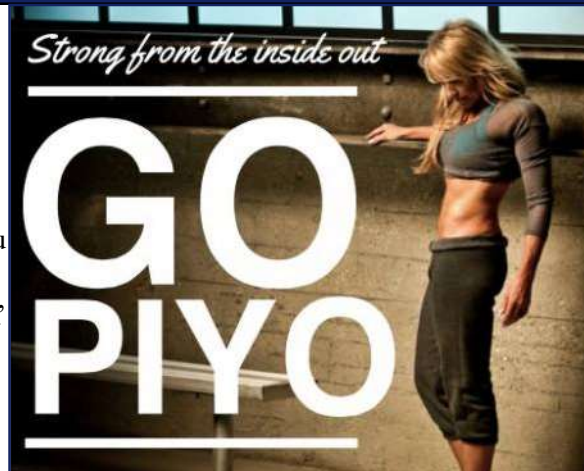
*Please register by October 18*



## PIYO LIVE

PiYo Live combines the muscle sculpting, core-firming benefits of Pilates with the strength and flexibility of flowing yoga movements. You will use your body weight to perform a series of continuous, targeted moves to define every single muscle – big and small. We crank up the music, the speed and the fun to give you an intense, yet low-impact workout that will burn crazy calories for a long, lean, beautiful physique. You will sweat, stretch and strengthen, all in one empowering PiYo Live workout. *Instructor: Kristi Weigel*

*Registration deadline is one week prior to class*



**Dates:** October 10, 17, 24  
(No class October 31)  
November 7, 14, 21  
**Time:** 5:15 to 6:15 p.m.  
**Place:** Discovery Center, 4444 Hadley Avenue  
**Cost:** \$35 per person

## MOMS ON THE RUN

Join Moms on the Run at the Oakdale Nature Preserve and make time for a healthier you this fall! Moms on the Run Oakdale/North St. Paul offers programming for all fitness levels, from walkers to beginning runners to experienced runners. The 8-week fall session is a great way to make new friends and stay in shape. Women of all ages, stages, and ability levels are welcome!

Two class types offered:

- Strength & Cardio Boot Camp - class format includes walk/run or jog/run interval training, strength training and stretching.
- Endurance Training - our distance option offers a steady pace cardio workout with an option to focus on increasing mileage.

Visit <http://www.momsontherun.com/oakdale.html> for more information and to register today!



## HATHA FLOW YOGA

Hatha Flow is a blend of various styles of yoga. Flow from posture to posture, rhythmically linking our breath with each posture, pausing at times to re-connect and center. Balance and stretch while standing, kneeling, sitting, and lying. Beginners are welcome as are those who have practiced yoga before. All students are encouraged to move at their own comfortable pace. Please wear comfortable clothing and bring a yoga mat. *Instructor: Joanne Romain is a registered teacher with the Yoga Alliance has been practicing yoga for over 19 years.*

### Tuesday Morning

Session 1:  
October 4 to November 29 (8 weeks)  
(No class November 8)

Session 2:  
December 6 to January 31 (8 weeks)  
(No class December 27)

Time: 9:30 to 10:30 a.m.  
Place: Discovery Center, 4444 Hadley Avenue  
Cost: \$69 per person, per session

### Wednesday Evening

Session 1:  
October 5 to November 30 (9 weeks)

Session 2:  
December 7 to February 1 (8 weeks)  
(No class December 28)

Time: 6:30 to 7:30 p.m.  
Place: Discovery Center, 4444 Hadley Avenue  
Cost: \$77 Session 1  
\$69 Session 2

## YOGA FOR STRESS and ANXIETY

In this new class you will be guided through gentle therapeutic yoga movements and learn breathing and meditative relaxation techniques to help counter stress and anxiety. The yoga movements can be adapted for anyone and the breathing and relaxation techniques are tools that you can “take off the mat” and into your life. Please wear comfortable clothes and bring a yoga mat.

Session 1:  
Mondays, October 3 to November 28 (9 weeks)

Session 2:  
Mondays, December 5 to January 30 (7 weeks)  
(No classes December 12 or 26)

Time: 6:30 to 7:30 p.m.  
Place: Discovery Center, 4444 Hadley Avenue  
Cost: \$77 Session 1  
\$61 Session 2

*Registration deadline is one week prior to class*

Drop in to  
try any  
yoga class for  
only \$12

*Registration deadline is  
one week prior to class*





# WINTER WONDERLAND

Saturday, December 17  
9 a.m. to 1 p.m.  
Discovery Center - 4444 Hadley

Visit with Santa  
Horse-drawn Hayrides  
Meet & Greet the Dogs of Winter  
Petting Zoo  
Candy Cane Hunt  
Bonfire with S'mores  
Holiday Face Painting  
Holiday Craft Station  
Breakfast & Lunch

***Free!  
Free!  
Free!***

Thank you to our sponsors:  
Oakdale Recreation, Platinum Bank,  
Oakdale Area Chamber of Commerce,  
and Maplewood/Oakdale Lions Club.

*Please bring  
nonperishable  
food and/or  
toiletry items  
to Winter  
Wonderland  
for the local  
food shelf.*

**Register online with no extra fees!**

**REGISTRATION**

There are five convenient ways to pay for programs and activities. For more information, please call 651-747-3860.

Online  
www.oakdalefun.com



Mail  
4444 Hadley Avenue N  
Oakdale, MN 55128



Fax  
651-747-3861



In-Person  
4444 Hadley Avenue or  
City Hall - 1584 Hadley Avenue



Drop Boxes  
Located in front of Discovery  
Center or City Hall parking lot.



651-747-3860 • www.oakdalefun.com

#### **REGISTRATION DEADLINE**

Registration deadlines are established for programs to ensure appropriate staffing, supplies, and facility needs. Please refer to program descriptions for each program's registration deadline.

#### **PROGRAM CONFIRMATIONS**

You will be contacted only if a program is full, cancelled, or if a program change is necessary.

#### **WAIT LISTS**

If a class or event is full, you may request that your name be placed on a waiting list in the event that an opening occurs.

#### **CANCELLATION**

Oakdale Recreation reserves the right to cancel, postpone or combine programs, and/or change instructors. Classes with insufficient enrollment will be cancelled and payment refunded or credited to your account. Participants will be notified of program cancellations prior to the start of the program.

#### **REFUNDS**

Registration fees for programs cancelled by the Recreation Department will be fully refunded. Other than Adult Trips, participants may cancel a registration three business days before the start of the program and receive a refund, less a \$5 administration fee. Once a refund has been requested, a check will be mailed within 45 days. If the registration payment was charged, a credit to the credit card will be processed. No refunds can be issued once a program has started or if tickets were purchased for a trip or event.

#### **SCHOLARSHIPS AVAILABLE**

Scholarships are available for persons who need financial assistance to participate in youth programs. Funds are limited and available on a first-come, first-served basis. For more information or to request an application, please call 651-747-3860.

#### **E-BROCHURES**

Receive your brochure by E-mail. You can have all your Oakdale Recreation information instantly and immediately when you sign-up for E-brochures. It's quick and easy to register. Submit your request via e-mail to [laura.heimkes@ci.oakdale.mn.us](mailto:laura.heimkes@ci.oakdale.mn.us) you will begin receiving your brochures with the next issue.

**Questions? Please call 651-747-3860  
or visit [www.oakdalefun.com](http://www.oakdalefun.com)**

*There's no residency  
requirement to participate in  
Oakdale's programs and events!*

# REGISTRATION FORM

**Oakdale Recreation Department ~ Discovery Center**  
Phone: 651-747-3868 / Fax: 651-747-3861 [www.oakdalefun.com](http://www.oakdalefun.com)

Name of Parent/Guardian or Adult Participant making payment Address City Zip

Home Phone

Cell Phone

Work/Other Phone

Email (please circle one):

Parent Guardian Adult Participant

**Emergency Contact Information for Participant (not parent or guardian):**

Name Telephone Number Relationship

**PERMISSION AND WAIVER:** I hereby agree to allow my child to participate in the Oakdale Recreation Department activity named below. In consideration of your accepting this registration, I hereby, for myself and my heirs, waive any and all rights and claims for damages I may have against the City of Oakdale and its representatives, for any and all injuries from whatever cause suffered by the participant (s) listed in the indicated activity below. I understand that the information that I have provided will be distributed to individuals involved with each recreation program.

The Oakdale Recreation Department often takes pictures, slides, and videotape of participants for program promotion and brochures. The completion of your registration signifies your acceptance of this consent.

Participant Name(s) First and Last	M/F	Age	Birthdate	Activity Name	Activity Date	Time	Location	Fee
Registration confirmation provided upon request								TOTAL \$

Parent/Guardian/Adult Participant Signature Today's Date

**OFFICE USE ONLY:** Date received: Amount Received: Rec'd by:

**MAIL:** Mail completed form and payment (checks made to "City of Oakdale" to:  
Oakdale Recreation, 4444 Hadley Avenue North, Oakdale, MN 55128

**PAYMENT TYPE:**

( ) Cash ( ) Check # ( ) Credit Card: Signature:

Circle: VISA MC AM EXP DISCOVER Card Expiration Date:

Card # Three Digit Security Code #

# OAKDALE UPDATE ENVIRONMENTAL SECTION



## IT'S NOT TOO LATE TO 'GO NATIVE'

Did you have plans to re-do landscaping this past summer and the time got away from you? The good news is that fall is a perfect time to add new native perennial plants to your yard. Butterfly milkweed, Blazing Star, Coneflowers and Black Eyed-Susan's are just a few of the wide array of beautiful and well adapted native plants that can survive Minnesota winters.

Using natives in landscaping provides numerous benefits for water quality, habitat, the environment and you. Native plants have long roots that allow them to find their own water, and as they are reaching far into the ground, they reduce soil compaction and filter out pollutants. Native plants are becoming increasingly popular for use in landscaping and restoration because they are low maintenance – no mowing, fertilizer or pesticides are needed. Because they are low maintenance, you save time and money.

Native plants also add color and beauty as well as provide food and habitat for bees, birds and butterflies. They reduce water pollution, help reduce fertilizer and pesticide use, help prevent storm water runoff, and they reduce air pollution since you don't need to use a lawn mower.

If you are interested in learning more about native plants, or adding some to your landscaping, visit [www.bluethumb.org](http://www.bluethumb.org) or call the Washington Conservation District at 651-330-8220, or go online at [www.mnwcd.org](http://www.mnwcd.org) where you can also sign up for a free site visit.

**DROP OFF AT  
CITY HALL YEAR ROUND:  
Christmas lights, extension cords,  
cellphones, eyeglasses, sunglasses,  
hearing aids, and flags.  
1584 Hadley Avenue. Monday  
through Friday, 8 am to 4:30 pm.**



## IT'S OFFICIAL! OAKDALE IS POLLINATOR FRIENDLY!

Because of the integral relationship bees and pollinators have in the development of our food, and because pollinators are in decline due to pesticide use, pathogens, and parasites, the Oakdale City Council passed a resolution in August declaring the city a pollinator-friendly community.

Recent research suggests a link between pesticides that contain neonicotinoids and the die-off of plant pollinators, including native bees, honey bees, butterflies, moths, and other insects. Therefore, the city is implementing best management practices in the use of plantings and pesticides in the maintenance of parks, open spaces and city property, refraining from the use of systemic neonicotinoid pesticides.

In addition, for residents and businesses, this pollinator-friendly designation means the city will step up efforts to communicate current, science-based information regarding environmentally sound garden and pest practices for creating and maintaining a pollinator-friendly habitat.

It's in the public interest for everyone to be committed to a safe and healthy environment through protecting pollinators!

### POLLINATOR PLANTING POINTERS:

- 1) Pick native plants.
- 2) Plant single flowers. Bees like flowers that have the pollen front-and-center with a relatively easy way to get to it.
- 3) Incorporate grasses in your planting beds to provide nesting sites.
- 4) Avoid insecticides.
- 5) Plant for early and late bloom. Some early sources of nectar include crocus and dandelions. Plant late bloomers, such as asters, to support pollinators after many summer blooming plants have faded.
- 6) Don't plant invasive species.
- 7) Plant for all phases of life. If you want Monarch butterflies in your garden, plant milkweed. If you want blue swallowtails, plant parsley.

# OAKDALE UPDATE ENVIRONMENTAL SECTION

## REDUCE ENERGY CONSUMPTION THIS WINTER

Here are several tips to reduce energy consumption and maintain comfortable temperatures in your home this winter:

1. Use the sun for free heat. Open the curtains on your south-facing windows to bring free heat into your home. Close your window coverings when the sun goes down to keep the heat inside.
2. Bundle up with warm accessories. Instead of turning the heat up, put on a sweater and warm socks. Keep throw blankets on your couch and add an area rug to insulate the floor.
3. Use ceiling fans to your advantage. Ceiling fans can be used strategically to achieve better airflow: counter-clockwise will push hot air up in the summer, but clockwise will push hot air down into your rooms warmer during cooler months.
4. Adjust the thermostat at night. According to the U.S. Department of Energy, you can save about 10 percent per year on your heating bills by turning your thermostat down 10 to 15 degrees for eight hours. Also, consider investing in flannel sheets and a warm comforter for your bed.
5. Heat only the rooms you use. If you have little-used guest rooms or large storage areas, close and seal off the vents in those rooms. Use a space heater in the rooms where you need it, and set the thermostat to 62 degrees to save even more energy.
6. Keep your furnace clean and unblocked. Check your furnace filter monthly, and replace it when it gets dirty.
7. Get a humidifier to add moisture to the air. Moist air feels warmer and holds heat better, so a humidifier can help you feel comfortable when your thermostat is set at a lower temperature. You can also increase the humidity in your home with a collection of house plants.
8. Invest in insulation. Hundreds of thousands of dollars in energy costs are lost each year due to escaping heat and cold air in homes without proper insulation. Get some inexpensive insulation from your local home improvement store, and cover up all those areas where heat might escape. Start with foam weather stripping for your doors and windows.
9. Decorate with LED lights for the holidays. Buy new LED holiday lights, which use 75 percent less energy and last 25 times longer than incandescent lighting. In addition to consuming less energy, LED lights don't

emit as much heat and are more resistant to breakage, making them a safer alternative. Turn in your old lights at City Hall to be recycled.

10. Use exhaust fans only when necessary. Exhaust fans in your kitchen and bathroom pull the hot air that rises to the ceiling out of your home. Use exhaust fans sparingly, and shut them off when you are done with them.

## KEEP LEAVES, GRASS CLIPPINGS OUT OF WETLANDS, PONDS, LAKES

Leaves and grass clippings might be natural, but that doesn't mean they're good for bodies of water. When yard waste gets washed into the water, it decomposes and releases phosphorus, which feeds algae, causing ponds to turn green. You can help keep our waters algae-free by raking up leaves and grass clippings from your street and yard. Also, clear away any debris covering the nearest storm drain.

Rake and bag leaves from your yard, sidewalk and driveway, or use your mower to mulch leaves into your grass. (Mowing is less time intensive than raking, and the shredded leaves act as a natural fertilizer for your lawn.). Dispose of leaves by composting them in your yard, bagging them for curbside pick-up, or taking them to Composting Concepts at 4800 Cottage Grove Drive. The business is open April-November. Call 651-769-0531 for hours.

Remember it is illegal to put leaves and yard waste in the regular garbage or dump them in bodies of water or the buffers around water.



# OAKDALE UPDATE ENVIRONMENTAL SECTION

## BRING THESE ITEMS TO YOUR ENVIRONMENTAL CENTER



The Washington County Environmental Center is well-known as a place you can take your household hazardous waste. Many people also know the center accepts common recyclables, and, while there, they take advantage of the Re-Use Room. Here are some items accepted by the Center that you might not have thought about:

- VHS, DVD, and VCR players
- Phones, cell phones, and fax machines
- Computers and monitors
- Printers, keyboards, mice, speakers

- Microwave ovens
- Holiday lights and extension cords
- Campaign and real estate lawn signs, metal stands
- Scrap metal, such as small household items (like pots and pans), tomato cages, fence posts, and tools

The Washington County Environmental Center is located at 4039 Cottage Grove Drive in Woodbury and is open on Tuesdays (11 a.m. to 7 p.m.), Thursdays and Fridays (8 a.m. to 4:30 p.m.), and Saturdays (8 a.m. to 2 p.m.). Call 651-430-6655 with questions.

## HOLIDAY WRAPPING PAPER: RECYCLE OR TOSS?

Generally speaking, paper is recyclable. However, wrapping paper poses several issues when it comes to recycling. Many of the materials used to create specialty wrapping paper include dyes, laminations, and non-paper additives like glitter, foil, or plastic, and tape. All of these added materials deem most wrapping papers non-recyclable, and they will more than likely end up in regular garbage.

Here are some alternatives to using printed gift wrap:

Wrap gifts in newsprint. It is not only recyclable, but also very inexpensive. Recipients can have fun reading the print before opening the gift, and the package can be colorful when you add bright ribbon.

Use Gift Bags. Many gift bags come in non-dyed, non-laminated paper stock. Although these bags do not have the sparkle and shine that others may have, you can spruce up your gifts by stamping or decorating your own recyclable bags. If you have children, it may make for a fun holiday activity decorating and creating your family's special holiday gift-giving bags. Remember, if you wrap your gifts in recyclable materials, your recipients won't have to worry about the recyclability of the packaging.

Make the gift wrap a part of the gift. Oftentimes the present itself can create the wrapping of the gift. For example, scarves, soft blankets, dishtowels, or reusable shopping bags can create green wrappings for gifts.

## MULTI-FAMILY DWELLING RECYCLING TIPS

Those living in apartments, condos or other multifamily housing, can recycle all the things your single-family-home neighbors do:

Choose a location in your home to collect and store recyclables. The kitchen is one of the best places because it is the source of most household waste. Consider under the sink or on a shelf or on the floor of a closet. Use door knobs or hooks to hang cloth bags with lighter recyclables. To store and transport recyclables, choose small containers such as reusable bags, baskets or cardboard boxes.

Place small containers in the bathroom sink cabinet, one for garbage and another for recyclable boxes and bottles. In an office area, place a recycling container for paper and newspaper next to the desk.

Make preparing recyclables part of your household routine. For cans and bottles, remove lids and rinse or wash. (Labels do not need to be removed.) Flatten cans and plastic bottles to save space. Anything that comes with the newspaper can be recycled with the newspaper including the plastic bag. Flatten cardboard boxes and cereal boxes to save space. Recyclables can be placed together in the same container.

When the containers are full, take them to the recycling containers in your complex, or take them to the Washington County Environmental Center, 4039 Cottage Grove Drive, Woodbury. *See adjoining story for hours and phone number.*

**Oakdale's recycling programs and other Environmental Management Commission activities are funded, in part, by grants from Washington County.**

City of Oakdale  
1584 Hadley Avenue North  
Oakdale, MN 55128  
www.ci.oakdale.mn.us  
651-730-2704

PRSR STD  
US POSTAGE  
PAID  
TWIN CITIES MN  
PERMIT NO. 4077

## ECRWSS POSTAL PATRON

### FARMERS MARKET

15th and Hadley 2 to 6 p.m.  
Wednesdays until October 26

### FLASHLIGHT PUMPKIN HUNT

4444 Hadley Avenue  
Wednesday, October 27 7 to 8:30 p.m.  
Register by October 20. Details inside

### OAKDALE AREA BUSINESS SHOWCASE

Envision Center, 484 Inwood Avenue  
Saturday, October 30 11 am to 4 p.m.  
Face painting, balloon artist, and much more!  
Trick or Treat at each booth! Details inside.

### \$ FOR YOUR HALLOWEEN CANDY

Leftover / unwanted candy is being collected by  
All Family Dental, 1075 Hadley until November 4.  
Candy will be sent to persons overseas serving  
in the military overseas as part of Operation  
Gratitude. *Thank you, All Family Dental!*

### INDOOR MARKET

4444 Hadley Avenue  
Opens November 26. See inside for dates.

### WINTER WONDERLAND

4444 Hadley Avenue  
Saturday, December 17 9 a.m. to 1 p.m.  
Free family fun! Details inside

### RECYCLE HOLIDAY LIGHTS

1584 Hadley Avenue  
Recycle holiday lights at Oakdale  
City Hall year round.

### RECYCLE HOLIDAY TREES

from December 27 through January 31 at Public  
Works, 1900 Hadley for only \$3 per tree. Hours:  
7:30 a.m. and 3 p.m., Monday through Friday.

### VOTING INFORMATION

**REGISTERING TO VOTE.** If (1) you are new to Oakdale, (2) your name or address has changed, (3) you have not voted in the past four years, or (4) you have never voted, you need to register before casting your vote. You can register ahead of time (by October 18) or you can register at your polling place on election day by providing the required proof of residency.

**WHERE TO VOTE.** Polling place locations at: <http://pollfinder.sos.state.mn.us> or call (651) 730-2704 or (651) 739-5086.

**EARLY VOTING - ABSENTEE BALLOTS.** Voters may vote early or absentee by mail or in person at the following locations: Washington County Service Centers: Stillwater: 14949 - 62nd Street, Woodbury: 2150 Radio Drive, Cottage Grove: 13000 Ravine Parkway South, and Forest Lake: 19955 Forest Road North. Applications at [www.co.washington.mn.us](http://www.co.washington.mn.us) or by calling (651) 430-6175.

**GENERAL ELECTION: NOVEMBER 8**  
**POLLS OPEN: 7 am to 8 pm**

### COMMUNITY SURVEY SOON UNDERWAY

About 600 Oakdale residents will be surveyed in October regarding their ideas on how the city is doing. The survey, which will be conducted by telephone, will cover a range of topics such as snow removal, parks, and customer service. Jason Foutz, assistant city administrator, said the questions are designed to provide "actionable" results. "When the survey is complete," he said, "we will know what changes residents would like to see." Survey participants will be selected at random.

Representatives of an independent company will conduct the survey and they will ask residents to provide a specific time when participation in the survey will be most convenient.

Results of the survey will be published in the Spring issue of the *Oakdale Update*.