

BUILDING DEPARTMENT
1584 Hadley Avenue N
Oakdale, MN 55128
Phone: 651-739-5150
Fax: 651-730-2820
E-Mail: permits@ci.oakdale.mn.us
www.ci.oakdale.mn.us

SMOKE AND CARBON MONOXIDE ALARMS/DETECTORS (for use in single family dwellings, townhomes, and duplexes)

Smoke Alarms/Detectors

If your home has smoke alarms, check the date on the unit to determine how old it is. The NFPA recommends replacing your alarms every 10 years. All smoke alarms shall conform to the latest UL Standards. UL numbers are listed on the device and packaging. Hardwired alarms shall be replaced with hardwired alarms.

Location

The State Building Code requires smoke alarms be installed in each of the following locations:

- In each sleeping room; and
- Outside each separate sleeping area in the immediate vicinity of the bedrooms; and
- On each additional story of the dwelling, including basements but not including crawl spaces and uninhabitable attics.
- Installed per manufacturers recommendations.

Power Source

Unfinished areas shall be hard wired and equipped with a battery backup. Existing finished areas may be solely battery.

Carbon Monoxide Alarms

- Carbon monoxide alarms may be a combination type with a smoke alarm, or may be outlet powered or battery operated carbon monoxide alarm.
- All carbon monoxide alarms shall conform to the latest UL Standards. UL numbers are listed on the device and packaging. Install per manufacturers recommendations.

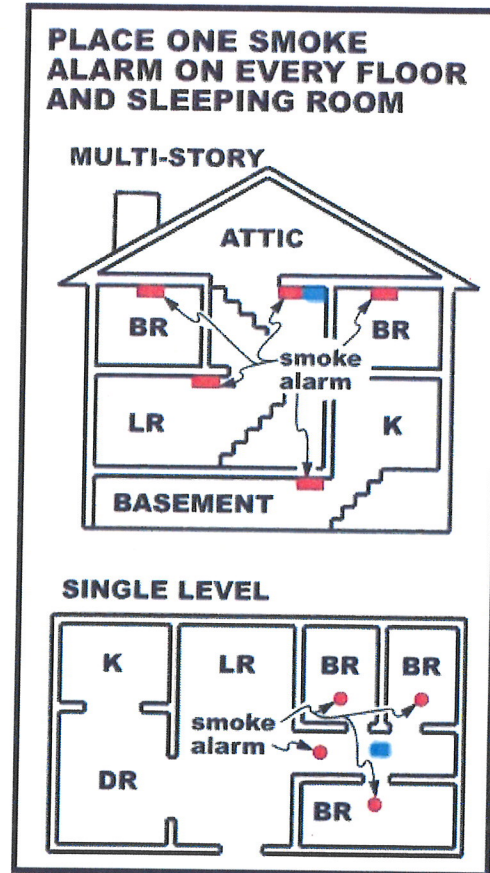
Location

Within ten (10) feet of each room used for sleeping purposes.

Effective Dates

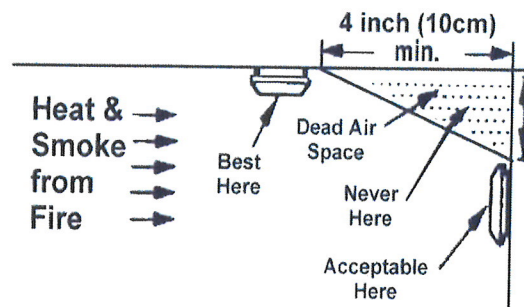
Effective January 1, 2007, all newly constructed single family homes and multifamily dwelling units.

Effective August 1, 2008, all existing single family homes shall be equipped with an approved carbon monoxide alarm meeting U/L specifications.



Carbon Monoxide
Detector

Smoke
Detector



Smoke detectors shall be mounted inside bedroom door on the ceiling at least 4" from a wall or on a wall with the top of the detector not less than 4" or more than 12" below the ceiling.